



## In this Issue...

Pg. 2  
Thoughts from the Rabbi

Pg. 3  
President's Column

Pg. 4  
Update from the Building  
Committee Chair

Pg. 6  
Executive Director's Column  
Library Updates

Pg. 7  
Education Director's  
Column

Pg. 8  
By Word of Mouse

Pg. 10  
Volunteer Appreciation

Pg. 12  
Social Action News  
Condolences

Pg. 14  
Memorial & Tribute Gifts

Pg. 18  
Calendars

Would you like to be on our  
email list and receive the  
weekly announcements?  
Email Cheri at  
office@bethisraelcenter.org.



Temporary mailing address  
and office location:

126 S. Hamilton St.  
Madison, WI 53703

(608) 256-7763

## Upcoming Events

### Joey Weisenberg Shabbaton—May 2-3

Welcome Shabbat (and Joey Weisenberg!) with Kabbalat Shabbat services and a dairy potluck dinner on Friday, May 2 at 5:45pm at 725 Gilmore St. Wind down Shabbat Saturday evening at BIC-downtown with Mincha at 6:45, followed by wine and cheese, Ma'ariv and Havdalah.

### Groundbreaking—4:00pm Sunday, May 4

Celebrate the foundation built for us by our forebears and the start of construction on the new Beth Israel Center. Enjoy a few short presentations and light refreshments.

### Kibud Limudim—Saturday, May 17

Celebrate our community of learners — those completing milestones in their Jewish education (2nd, 5th and 7th graders) and all of our adult education participants — during Shabbat morning services and with a special Kiddush afterwards.

### Lag B'Omer BBQ—3:30pm Sunday, May 18

It's an annual tradition! Same Rabbi grilling, same menu (burgers and hot dogs), same cost (free!), but a different location. Find us this year in the parking lot at Temple Beth El, 2702 Arbor Drive.

### Tikkun Leil Shavuot—7:00pm Tuesday, June 3

The theme of this year's community-wide Tikkun is Scandal! How do we as Jews handle Scandal? And scandalously good food? Come find out at our communal Tikkun, this year at Temple Beth El.

### Summer Shabbat Potlucks in Hoyt Park—one each month, June-September!

Mark your calendars and welcome Shabbat with your Beth Israel friends in the great outdoors!

*June 20, July 18, August 15, September 5*

Services begin at 5:45pm and all are welcome to stay for dinner. Bring friends and kosher-dairy food or drink to share. Paper plates and plastic cutlery provided.

### Where to Find Us

**Shabbat morning services** this spring and summer are at Temple Beth El in the lounge. The address is 2702 Arbor Drive; please enter from Knickerbocker Street.

**Shavuot services** (June 3-5) will also be at Temple Beth El.

**Morning and evening minyan**, Sundays and weekdays, is downtown at 126 S. Hamilton St.

**Kabbalat Shabbat services** are at members' homes when they're not in Hoyt Park. Please check the website or call the office for locations. All are in walking distance of our permanent address.

## Beth Israel Center

**Joshua Ben-Gideon**  
Rabbi

rabbi@bethisraelcenter.org

**Elissa Pollack**

Executive Director  
elissa@bethisraelcenter.org

**Beth Copelovitch**

Education Director  
education@bethisraelcenter.org

**Deborah Hoffman**

Program & Youth Director  
hoffman@bethisraelcenter.org

**Cheri Keen**

Administrative Assistant  
office@bethisraelcenter.org

**Stefanie Rose**

Librarian  
library@bethisraelcenter.org

**Mike Wampole**

Setup & Maintenance

.....

**Cynthia Hirsch**

President  
president@bethisraelcenter.org

**Harvey Temkin**

Immediate Past President

**Jordan Loeb**

President-Elect

**Dan Sidney**

Vice President-Education

**Don Miner**

Vice President-Finance

**Jeff Lindholm**

Vice President-House

**Rick Ezell**

Vice President-Ritual

**Marc Shovers**

Secretary

**Sylvia Grunes**

Women's League Rep

**Bob Skloof & Judy Pieroffi**

Social Action Cte. Chairs

**Mike Pratzel**

Youth Committee Chair

**Nancy Resnik**

Personnel Committee Chair

.....

Next Centerite Deadline:

**July 7, 2014**



# Thoughts from the Rabbi...

## Rabbi Wisconsin and the Case of Vegetarian Cheese

*The Rabbi's Office on the ground floor of the BIC building in a city that knows its cheese....I found her one day when I came back from lunch. She smelled enticing, even on a full stomach. Her milky white skin shimmered in the fluorescent glow of my office light.*

She spoke: "Rabbi, why can't your congregants enjoy me at kiddush?"

I replied: "It hardly seems appropriate for you to be asking me this question!"

She then told me what I already knew. She was a wheel of Bent River Camembert, produced just down the road in Mankato, MN. And she is made only with microbial enzymes!

"I can't think of a reason why your congregation should not be able to spread me on their Challah each and every Shabbat at your kiddush! And not just me, but any and all cheese made with microbial enzymes should be allowed."

That wheel of Camembert showed me the light. I did more research. As it happens, more and more cheeses are being produced using microbial enzymes, sometimes called vegetarian enzymes or vegetarian rennet. And further, the production of cheese does not require any cooking.

Broadly speaking, the making of cheese requires a few basic steps although each variety has its own particularities, like fat content. Milk is mixed with something (in this case microbial enzymes) which separates the milk into curds, the solid part, and whey, the liquid. The curds are then formed into particular shapes, often a wheel. Molds are often introduced to give a cheese a particular flavor. Then the cheese is aged.

I made a proposal to the Ritual Committee last month that we should begin to

allow the use and consumption of confirmed vegetarian cheeses (even without a heksher) in our kitchen and social hall. They agreed that this would be a fitting halachic change for our community. Before instituting this change, I want to share the news of this possibility with you and invite your feedback at [rabbi@bethisraelcenter.org](mailto:rabbi@bethisraelcenter.org).

I want to give some time for feedback from the congregation and then we hope to institute this change soon, even before we return to our new building. I do need to determine exactly how this policy will work. We need to find a way to assure ourselves that a particular cheese is vegetarian and make that process known to the congregation. For example, just seeing the word "enzyme" on a list of ingredients does not provide enough information. There are other enzymes that are animal based and not specifically rennet that are used in cheese making, and they would be problematic.

Cheese making is a kosher conundrum. If the traditional rennet from a calf is considered meat, then there is no way that you can mix it intentionally with milk and have that be kosher. If it is not meat, then it should be very easy for cheese to be kosher. In fact, there are a number of legends about Orthodox rabbis who approved of non-hekshered cheeses either in theory or for personal use, while being unwilling to make the statement that they were kosher for everyone. This policy in no way makes a judgment about the kashrut of cheese produced using traditional rennet, which is enzyme collected from the fourth stomach of a suckling calf.

Shalom,

Rabbi Joshua Ben-Gideon  
[rabbi@bethisraelcenter.org](mailto:rabbi@bethisraelcenter.org)



# President's Column

Cynthia Hirsch

I spoke on Yom Kippur about bringing down walls, and by the time you read this, that is what will be happening. As I write this, the May 4th groundbreaking is just around the corner, and very soon all that we have been anticipating will be a dusty reality. One more yasher koach to the Rabbi and staff for getting us efficiently packed up, moved out, and adjusted to our temporary spaces. By all accounts, Shabbat morning and chag services in the Temple Beth El lounge have been wonderful, and we continue to appreciate Temple Beth El's generosity. It is, of course, important that we continue to support one another as a community, even as we wander in the desert of multiple sites and construction. We need to continue to get our kids to Talmud Torah, celebrate the spring holidays and chaggim, and carry on the operating business of the synagogue.

On a personal note, and at the risk of making this column too much about me.....two events in the past few weeks have really brought home to me just how fine a community we are.

My mother passed away in early April, and for the weeks before and after her death I was quite distracted and of course upset. This community greeted me with comfort and sustenance when I returned home for the final days of Shiva in a way that I believe speaks so strongly to who we are and what we are about. When these life moments occur, at times unexpectedly, we truly do become each others' extended family. We rely on each other and come through with comfort. Thank you.

And on a lighter note, in the middle of my family dealing with my mother's terminal illness, my son Ethan accepted his first Rabbinical pulpit. Ethan will be ordained at the Jewish Theological Seminary on May 22nd, and he will become an Assistant Rabbi at the Park Avenue Synagogue in New York City. The honest

truth is that this community played a big part in preparing Ethan for this moment.

He is 100 percent a product of our Talmud Torah, Midrasha, and USY. He grew up running through our soon-to-be-remodeled hall ways, crashing into Deb, and Annabelle Argand, and Jake Heifetz. He got in trouble for having a fist fight on the shul lawn. On his Bar Mitzvah, Si Hellerstein told him he did well, and he began to dream of being a Rabbi. It really did take the whole village to raise this one.... so Thank You.

I completely understand that not everyone in our congregation may feel as I do about the warmth and inclusiveness of our community. Therein lies our real work. We have shown we can handle the logistics and the finances. The challenge ahead for us is to insure that every member feels like a valued part of Beth Israel Center. The walls will return and they will be prettier. Our task is to fill the space within them with a sense of meaning and belonging.

Ethan's best friend in Talmud Torah was (still is) Natan Mandel. On May 30th, the Shabbat before Natan gets married to the lovely Jessica Adelman and Ethan officiates for the first time at their wedding, Natan's parents Ron and Cherie Diamond and I will jointly sponsor the kiddush to celebrate this double simcha. The kiddush will necessarily be a simple one, as it will be in a space at Temple Beth El that is less spacious than our social hall, but it will be no less joyous. Please join us in honoring our children who grew up and thrived within our walls. Because no matter what state of destruction and rebuild the walls are in.....we truly are and will continue to be a wonderful community.

Cynthia Hirsch, President

## Weekday Minyan Times

To assure a weekday minyan, contact the office,  
256-7763

**Our weekday minyan meets at 126 S. Hamilton St.**

Sunday mornings  
8:15am

Monday & Thursday mornings  
7:00am

Sunday thru Thursday evenings  
5:45pm

## Office Hours

**Monday - Thursday**  
9am to 5pm

**Friday**  
9am to Noon

**256-7763**  
[office@bethisraelcenter.org](mailto:office@bethisraelcenter.org)

Temporarily located during our construction project at  
126 S. Hamilton St.  
Madison, WI 53703



# From the Building Committee Chair

---

Jordy Loeb

As I write this column, just before Passover, I am aware that today's updates will be outdated when this is read. Depending on the alacrity of our printer and your postal carrier, you should be reading these words in early May and looking forward to the groundbreaking ceremony at 4:00 on Sunday May 4. Much of this column will be a prediction of what should happen in April. Let's see how we do.

The Board of Directors unanimously approved the Master Project Budget and finance plan at its April meeting. The Board also authorized the start of construction. To date, we have vacated the building and moved our operations. Shabbat and Holiday services as well as Talmud Torah are taking place at Temple Beth El. Our office, daily minyan, library and some classes are downtown at 126 S. Hamilton St. And many of our fixtures, cabinets, equipment and other things we're not keeping have found new homes thanks to Habitat for Humanity and others.

If we have stayed on schedule, demolition of portions of the building are now complete. Contractors have removed portions of the building that will be replaced and demolished interior space that will be renovated. We have gently preserved important pieces of the old building so that we can incorporate them into the new space. C.G. Schmidt has begun preparing the site for new construction. Structural material has been ordered. We might even be seeing portions of the foundation taking shape.

The groundbreaking ceremony will mark the beginning of rebuilding. The building will take shape over the summer. We hope to be able to use portions of the building, including the sanctuary, by Rosh Hashanah. The building will not be finished, but we should be able to start moving back in. As the saying goes, "from my word processor to God's ears."

\*\*\*

*A few notes about the diagrams on the facing page, especially for anyone who memorized the images presented in December or in the Winter Centerite:*

The Building Committee has been working diligently to keep the project on budget. Some changes have been made to control costs; none have changed the scope of the project. The changes have actually given us a better plan.

Astute observers will note, from top to bottom of the page:

*Lower Level--the curve of the East wall has been straightened to reduce excavation expense, so....*

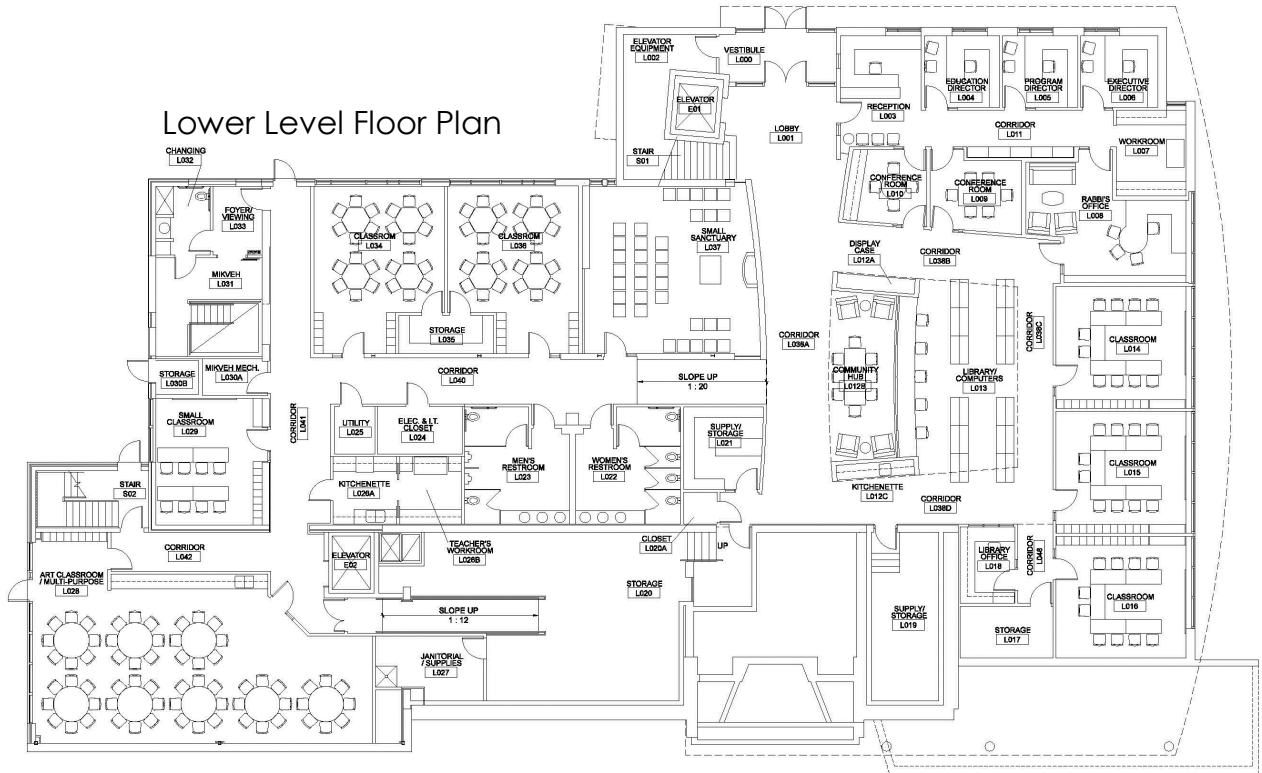
- 1) The workroom is now at the back of the office suite, and the Rabbi's office has a slightly different shape.
- 2) There are three classrooms along the eastern wall and they all have windows (rather than indirect natural light).
- 3) We added a classroom at the west end and consolidated custodial work space into a large storage and mechanical room.
- 4) The large classroom in the southwest corner has been reconfigured.

*Main Level*

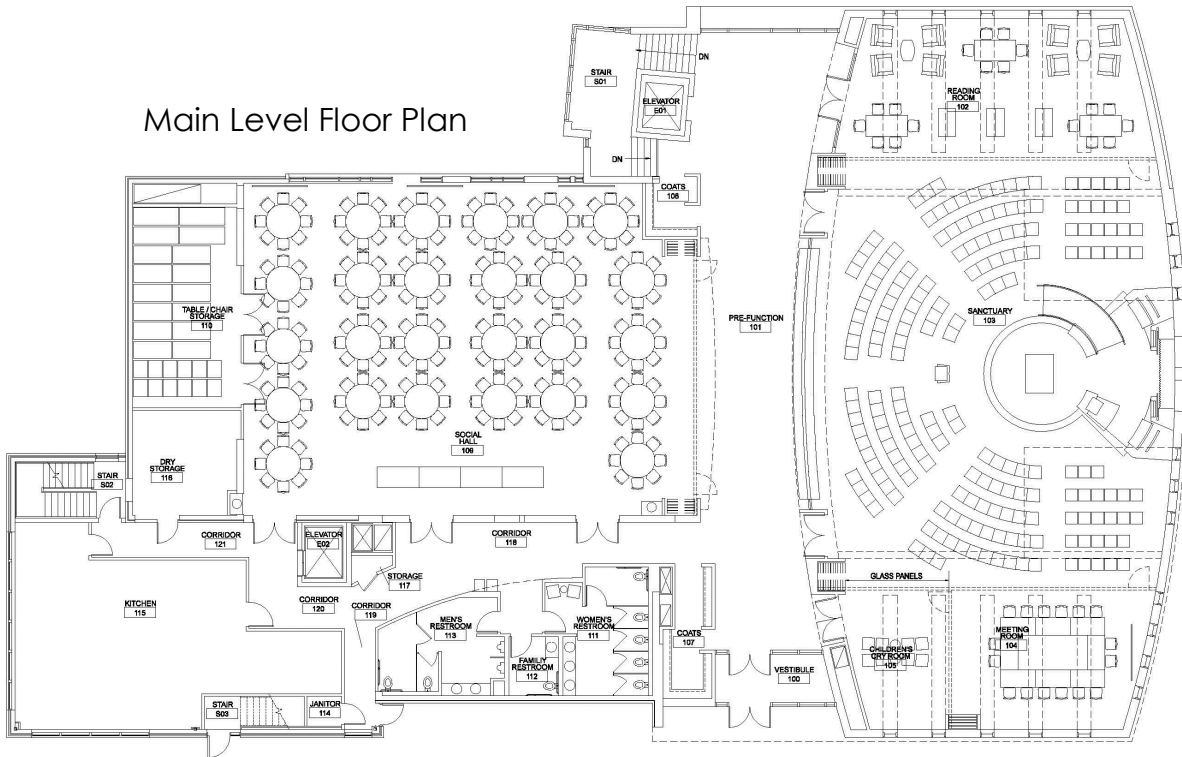
5) We have decided not to move the stage wall in the social hall. Keeping this structure in place saves significant cost, and the storage area at the west end is slightly larger. The movable wall separating the social hall from the pre-function space/lobby, has shifted closer to the sanctuary so that the size of the social hall remains unchanged.

*Throughout, tables and chairs are shown to indicate how much furniture could fit in these spaces — not how they will be arranged on a regular basis.*

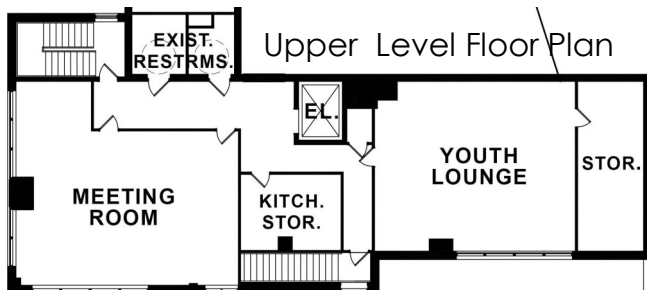
Lower Level Floor Plan



Main Level Floor Plan



Upper Level Floor Plan





## From the Executive Director's Desk

Elissa Pollack

It's been quite a spring so far. From the moment back in February when it became clear that vacating our shul would give us the distinct possibility of being in our newly renovated sanctuary for Rosh Hashana, our staff and many congregants have been in high gear making sure all the moving parts of our synagogue's operations found good temporary homes.

I won't sugar coat it. Moving a shul was an enormous task. But in so many ways it was incredibly easy, as well. What made it easy was knowing that no matter where our services, classes, meetings and social gatherings were taking place, Beth Israel Center's ruach would follow us anywhere.

I will (now that it's behind us) admit to feeling something like stage fright as I set out for Temple Beth El on Shabbat morning, April 4. While I knew that all the *things* were where they needed to be — Torah scrolls, siddurim and chumashim, tallitot and kippot, food for Kiddush, and the stuffed Torahs and picture books for our youngest congregants — and was reasonably certain that everything would go smoothly, I was, I'll admit now, just a little bit anxious to see how all the planning would pan out.

The smiles, hugs, joyous davening and people chipping in to make it all feel right were no surprise at all. But just because they were expected doesn't mean they should go unrecognized. Thanks everyone. Keep smiling, hugging and singing your hearts out. It makes all the difference in the world.



## AJ & Celia Rosenberg Library

Stephanie Rose

### The Library Is Out And About!

**THANK YOU** to all of the friends of the library who helped before, during and (who will help) after the big Beth Israel Center move to our "downtown digs." Packing up and vacating the library and bidding a fond farewell was made so much sweeter by all of the kind assistance and enthusiasm of Howard Bregman, Natalie Borenstein, Josh, Jake and Hanna Rose Kohn, Mia Kurzer, The Loeb Family, Lisa Ratta and her sons, Steve Nadler, Tziporah Quick, Erica Kesin Richmond and Zachary Richmond, Karen Shevet Dinah, Jim Wear and others who asked to remain anonymous.

Our collections are safe and secure at our temporary home at **126 S. Hamilton Street**, in the same location the Madison Public Library used during the Central Library renovation. The A.J. and Celia Rosenberg Library has a shelf with a rotating selection of books available any time you care to stop by. If you bring your children with you to minyan they will have access to books. **Self-serve check out** is available to our members. You may also **return** books at the library shelf. If you need materials from the collections in storage, please contact the librarian at **library@bethisraelcenter.org**

As always, library materials are available to members who are unable to come to the library. For assistance, please leave a message for the librarian at (608) 256-7763. While we look forward to moving in to our new space, the library is out and about for your convenience during construction. To all our friends, again, **THANK YOU**.



# From the Education Director's Desk

Lily Nagy-Deak

With Pesach behind us and the summer quickly approaching, I have begun to reflect on the year that has passed. Our Talmud Torah was blessed with an amazing team of teachers; our Family Education programs provided parents and students opportunities to learn together, and our Yom Rishon Preschool Program has given our littlest community members their first taste of Jewish education.

With guidance from Beth Copelovitch, I developed and implemented a major curricular addition -- a 7th grade Holocaust Studies unit -- into Talmud Torah. In Adult Education, we have maintained our new Beit Midrash -- topics have included Prayer, Obsession, Torah study, Love Stories in Talmud, God, and Modern Mikvah -- I hope to see this program continue to grow.

Todah rabah to everyone who helped pack and move Talmud Torah. Thanks to your assistance, we did not lose any class time, our students and teachers have all the supplies and resources they need, and we have settled into our temporary dwelling at Beth El.

I would like to invite you to two events to wrap up the year:

- Kibud Limudim (May 17): during Shabbat morning services we will honor our community of teachers and learners
- Lag B'Omer cookout (May 18): following our final TT class of the year, come join the BIC community for a picnic! (See page 1 for details.)

L'shalom, Lily

## ADULT EDUCATION OPPORTUNITIES

### **NEW: Lunch & Learn Downtown!**

Bring your own lunch and enjoy a little learning and schmoozing with the Rabbi and fellow congregants.  
*Tentative dates: May 7 and 21.*

### **Yiddish ~ Mondays, 7-8:30pm**

Join Yiddish enthusiast and talented teacher Sylvia Grunes as she builds a love for the Yiddish language and culture through her long-running classes. All levels are welcome!  
Contact the office for location.

### **Talmud Class Tuesdays 1:30pm Downtown**

Come study Talmud in its original Hebrew and Aramaic with Rabbi Joshua Ben-Gideon. New students are always welcome. Metered parking spots are right outside the door!

### **Beit Midrash**

#### **April 29 & May 25 ~ 7-8:30pm Downtown**

Jordan Rosenblum presents "Cuts Like a Knife: On the Translation of Mishnah Hullin," dealing with rabbinic laws of food including slaughter and meat and milk. Explore the world of *hevruta* (partner) learning and dive into texts from Prof. Rosenblum's upcoming translation of Mishna Hullin.

### **Hebrew II ~ Thursdays, 7pm**

This class is designed for those interested in reading Biblical Hebrew through study of the weekly Torah portion. Whether beginner or intermediate readers, all levels of knowledge are welcomed. Led by Anna Heifetz. Check the website or contact the office to confirm schedule and location.

## Yom Rishon

Calling all families with preschoolers! Come to Yom Rishon about once a month on Sundays. With the shift in Talmud Torah time this spring to afternoons (and the location to Temple Beth El) Yom Rishon is also (temporarily) taking place in the afternoons at Temple Beth El, starting at 2:00pm. Enjoy interactive family learning on a different Jewish theme each time. Meet other families with preschool-age children.

Yom Rishon is a theme-based program, including art, movement, music, stories, and projects as well as further learning on the subject for parents and other adults who accompany the children. It is family education at its finest.

May 4  
*Israel*

June 8  
*Blessings*



# By Word of Mouse

Deborah Hoffman, Program & Youth Director

☆☆☆☆☆

## Observe Shabbat! Take your Standardized Tests on Sunday!

Study Hard, and feel great because, by taking the test on a Sunday, you increase your Shabbat observance and help to guarantee that this option is available for Jewish students in the future!

### JUNE Test Dates:

#### SAT:

June 8, 2014

For more information, call the Educational Testing Service at 866-756-7346.

#### ACT:

June 15, 2014

For more information, call the ACT Registration phone line at 319-337-1270.

On Friday night, January 31, 20 mice gathered for our favorite *Shabbat Schmooze* event, and welcomed our 8th graders to the marvelous MOUSY mishpacha. We got a taste of Kabbalat Shabbat davening with our congregation, shared the ‘How or where would you spend the best day of your life?’ ice-breaker, engaged in a Jewish text study about “Tattoos and Piercings” (Kol HaKavod to Eliav Goldman and Ariella Rader, with appreciation to Lily Nagy-Deak), savored a delicious veggie Israeli Shabbat dinner, and schmoozed out with our gracious host family—Eliav and Aviv Goldman, and Leora Saposnik. A delightful time was had by all.

Our next MOUSY adventure took us into the *other world* of Greek and Roman gladiator warfare and celebration, where we took part in a night of murder and intrigue on Saturday, February 22—our last program in the *former* MOUSY Lounge and BIC building. Dubbed “*Terror in a Toga*,” our murder mystery party welcomed 20 characters, all draped in togas and suitable trappings, who played their roles to the hilt.



Kudos to Rabbi Joshua Ben-Gideon for his willingness to be sacrificed as our one and only murder victim as the other players strategized, bribed, and connived to determine who the villain was; and dined on appropriate finger foods for the times—caprese salad, bruschetta, hummus, olives, grapes, nuts, and dates set on tables adorned with candelabras and ivy—all this, while vying for prizes of best dressed, best actor/actress, best guess of ‘whodunnit’, and most money corrupted. Job well done to Ariella Rader for masterminding our escapades.

MOUSY continued with another *Shabbat Schmooze* on Friday night, March 7. First, we made minyan with our congregation for Kabbalat Shabbat, and then transported our hungry tribe of mice to the warm and cozy host home of Maya and Matt Banks. We enjoyed a scrumptious Chinese Shabbat dinner, schmoozed aplenty, guessed shapes using Jenga wooden blocks, and played the game of “Settlers of Catan.” Fabulous and fun all around!

On Saturday night, March 22, 14 high-risk Jewish teens were “dressed to impress” at MOUSY’s *Casino Royale Night*, featuring poker and fiercely competitive ‘Go Fish’ at the home of Naomi Goldman-Nagel. After an ice-breaker where everyone told their favorite board or card game, the chips came out, the cards were put down, and the



betting began. Decked out in a suit and tie and classy dresses, the guests played their best hand—some learning poker for the first time. Best-dressed went to Avi Bernard-Donals and Eliana Schreiber. In the name of Tikun Olam, we donated nonperishables to the East Side Goodman Community Center. Kudos to our splendid hosts for the evening: Naomi Goldman-Nagel and Ben Gellman.

MOUSY was proud to be represented by Isaac Rudin at the CHUSY Spring Kinnus Convention in Chicago on the weekend of Friday, April 25, where the theme was “Jewish Identity”—exploring the Jewish choices we make in our lives based on how we identify ourselves as Jews in politics, sports, theater, music, and other aspects of everyday life.

Stay tuned for later details about *MOUSY Makes A Meal* when bunches of lunches were made for a local men’s shelter on Saturday night, April 26.

### ...KADIMA...KADIMA...KADIMA...

On Saturday night, February 15 through Sunday morning, February 16, a fun-loving group of Kadima teens got together to practice their ‘figure 8’s’ while ice-skating at the UW Shell Sports Center. We continued our frosty festivities by baking cookies, playing games, watching a movie, giggling galore, and just hanging out until lights went out. We woke up to a tasty breakfast, squeezed in more crucial chitchat, and then packed up to go home so we could gear up for our next week’s overnight—not really; more like *next year’s* overnight!

On Sunday afternoon, April 6, a sorority of middle-school girls shopped a little, noshed more than a little, and mixed-and-mingled a lot in downtown Madison for the Kadima State Street Chill-Out. With much browsing at frilly, shiny, sparkly, and pricey dresses at the specialty Citrine shop, Kadimaniks then pored over and tried on nearly every skirt, shirt, and dress in Rethreads consignment shop, and then took over the dressing rooms—all for the good of their elaborate attire. After stops at Little Luxuries and The Soap Opera, we lunched at Mia Za’s Cafe, talked about all-important world events, and then scurried over to The Chocolate Shoppe for a scoop of yummy ice-cream—our final destination.

Save the date of Saturday night, May 17 for our final program of the year. We’ll let the good times roll at a Bowling Bash and Pizza Party!



## MOUSY ELECTIONS Sunday, June 1

We’ll cap off the year with **Nominations/ Elections** on Sunday, June 1.

We’ll dine out for a flavorful veggie lunch at a downtown restaurant, while we carry on elections—we’ll masticate while we nominate and “electorate.”

All 8th through 12th graders welcome!

Contact Deborah Hoffman for more information.

## Yahrziets

### 1 Iyar / May 1

Charles Karp  
Isadore Libanoff  
Cecile Rogut  
Joe Wagman  
Dobe Widrevitz

### 2 Iyar / May 2

Rose Frank  
Libby Mead

### 3 Iyar / May 3

Yetta Chover  
Rose Melnik  
Louis Sweet  
Morris Sweet  
Helen Sweet  
Dora Weinberg

### 4 Iyar / May 4

Harry Dachman  
Beatrice Kosowsky  
Abraham Sinagub  
Ruth Weiner

### 5 Iyar / May 5

Doris Mae Campbell  
Abram Ginsberg  
Esther Gordon  
Bill Karpe  
Morris Mead  
Harry Paley

### 6 Iyar / May 6

Norman Balkansky  
Bernie Mazursky  
Moses Sweet  
Pauline Sweet

### 7 Iyar / May 7

Harry Moss  
Samuel Rosenfeld  
Harry Sweet

### 8 Iyar / May 8

Harry Rubnitz

### 9 Iyar / May 9

Shlomo Elmakias  
Louis Malamud  
Rose Pachefsky  
Max Schorr

(Continued on page 11)



## Rav Todot to BIC Volunteers

**Shabbat Kiddush Crew:** Donna Anderson, Trudy Barash, David Baum, Hannah Bernard-Donals, Jill Boissonnault, Marsha Cohen, Joshua Gabai, Esther de Laix, Louise Goldstein, Sylvia Grunes, Roz Gusinow, Jen Hadley, Billie Hellerstein, Cynthia Hirsch, Becky Holmes, Erica Kesin Richmond, Steve Kessler, Mina Kianovsky, Kazu Kitano, Judy Knupp, Clara Lazimy, Rafi Lazimy, Jessie Loeb, Arlene Lukin, Barbara Myers Temkin, Judy Pierotti, Elissa Pollack, Tziporah Quick, Kim Schwartz, Sion Shabtaie, Russ Shafer-Landau, Sue Shafer-Landau, Karen Shevet Dinah, Bob Skloot, Marc Syvertsen, Bruce Thomadsen, Regina Vidaver, Paul Wilson

**Kiddush Stager and Barista:** Karen Shevet Dinah

**Shabbat Niggunim Se'udah Shlishit Helpers:** Cher Diamond, Roz Gusinow, Laurel Mark

**Shabbat Greeters:** Naomi Chesler, Bob Factor, Cynthia Hirsch, David Hoffert, Laurie Nagus, Mike Pressman, Barry Rich, Francie Saposnik, Russ Shafer-Landau

**Purim Party Mavens:** Joel Ehrlich, Phyllis Holman Weisbard, Kathy Miner, Jonathan Pollack, Stefanie Rose

**Purim Party Partners:** Dawn Berney, Judith Burstyn, Cynthia Hirsch, Hanna Kohn, Josh Kohn, Judy Knupp, Laurel Mark, Laurie Nagus, Tziporah Quick

**Karaoke DeeJays:** Avi Bernard-Donals, Nathan Ehrlich, Isaac Rudin

**Community Purim Carnival Carnies from BIC:** Marsha Cohen, Shanee Ellison, Michael Heifetz, Jared Schwartz, Sara Karon, Judy Knupp, Aphra Mednick, Barbara Myers Temkin, Noah Pollack, Mike Pressman, Kim Schwartz, Karen Shevet Dinah, Ben Shovers, Miriam Syvertsen, Regina Vidaver

**Bake Walk Bakers:** Beth Fisher, Arlene Lukin, Elana Matthews

**MOUSY Bake Walk Booth Workers:** Avi Bernard-Donals, Ellen Bresnick, Hannah Ehrlich, Naomi Goldman-Nagel, Talia Ivry

**Purim Carnival Song Leader:** Isaac Rudin

**Pack-A-thon shredders, packers, schleppers:** David Baker, Matt Banks, David Baum, Avi Bernard-Donals, Bill Boissonnault, Jill Boissonnault, Natalie Borenstein, Howard Bregman, Jennie Edes-Pierotti, Joel Ehrlich, Beth Fisher, Aaron Friedman, Ben Gellman, Sam Gellman, Herman Goldstein, Sylvia Grunes, Roz Gusinow, Jen Hadley, Si Hellerstein, Phyllis Holman Weisbard, Sally Jones, Craig Katz, Sasha Kerlow, Erica Kesin Richmond, Evan Kivolowitz, Perry Kivolowitz, Sara Kivolowitz, Josh Kohn, Yaniv Lazimy, Kafryn Lieder, Jan Loeb, Jessie Loeb, Jordy Loeb, Arlene Lukin, Sherwood Malamud, Laurel Mark, Aphra Mednick, Steve Nadler, Laurie Nagus, Jon Pollack, Noah Pollack, Mike Pressman, Tziporah Quick, Lisa Rader, Fran Schrag, Sally Schrag, Sion Shabtaie, Karen Shevet Dinah, Bob Skloot, Ben Shovers, Marc Shovers, Anna Syvertsen, Marc Syvertsen, Miriam Syvertsen, Jim Wear, Paul Wilson, Sol Zaichick

**Lunch and Nosh Givers:** Bill and Jill Boissonnault, Bob Skloot

**Kid Power Packers:** Lena Ben-Gideon, Sophia Hadley, Mia Kurzer, Benno Loeb, Zachary Richmond, Eliya Syvertsen

**The Road Home Buddies:** Donna Anderson, Jill Boissonnault, Marsha Cohen, Steve Kessler, Judy Pierotti, Mike Pressman, David Resnick

**MOUSY Program Home Hosts:**

Matt Banks and Maya Banks for Shabbat Schmooze  
Lisa Goldman and Naomi Goldman-Nagel for Casino Night

**Laundry Angels:** Anna, Miriam, and Eliya Syvertsen; Kris Rasmussen

**Shabbat Morning Program Aides:** Bart Miller, Miriam Syvertsen

**Technology Support:** Perry Kivolowitz



## A Tradition of Deliciousness

One of the many ways to honor special occasions — and special people! — is by sponsoring a Kiddush. Sponsorship can be a donation of any size to the Martin and Serene Mazor Kiddush fund, which sustains our regular Kiddush lunches. Or, for a particular person, couple, or occasion, you can sponsor by donating \$200 or \$360. (Please note, these are reduced sponsorship levels, in place until we return to our renovated building.) Please contact Deborah Hoffman with questions about sponsoring Kiddush.

### Appreciation for recently sponsored Shabbat Kiddushim:

\* Perry Kivolowitz for 40 years of computer programming on February 22.

\* Anna Heifetz on March 1.

\* The Beth Israel Center community for honoring Rayla Temin for her decades of dedication to coordinating Shabbat and holiday service daveners and Torah leyners on March 29. Thanks especially to Donna Anderson, Marsha Cohen, Billie and Si Hellerstein, Cynthia Hirsch, Erica Kesin Richmond, Steve Kessler, Renata Laxova, Laurie Nagus, Barbara Myers Temkin, Judy Pierotti, Kris Rasmussen & Bob Factor, Francie Saposnik, Kim Schwartz, Karen Shevet Dina, and Paul Wilson for the roles they played in this special event.

### Appreciation for sponsoring upcoming Shabbat Kiddushim:

\*Anne Altshuler and Aaron, Joshua, Jonathan, and Benjamin Sulman to celebrate David Sulman's birthday, along with Kibud Limudim to celebrate our community of learners, together on May 17.

\*The parents of Natan Mandel (Ron and Cher Diamond) and Ethan Hirsch Witkovsky (Cynthia Hirsch), who will jointly celebrate the Aufruf for the wedding of Natan Mandel and Jessica Adelman and the graduation of Ethan Hirsch Witkovsky from the Jewish Theological Seminary on May 31.

\*Families of Graduating High School Seniors on June 7.

\* Si and Billie Hellerstein on June 21

### Yahrziets

**10 Iyar / May 10**

Joseph Amdur Fine  
Minnie Isaac  
Nicholas Polgar  
Ida Schmidman  
Abraham Shapiro  
Anna Sklar

**11 Iyar / May 11**

Rose Frank  
Ethel Jermyn

**12 Iyar / May 12**

Leonard Bessman  
Samuel Black  
William Gelman  
Ann Hammes

**13 Iyar / May 13**

Helen Richey

**14 Iyar / May 14**

Anna Black  
Elmer Borsuk  
Herbert Liebman  
Ben Setlick  
Shalom Sweet

**15 Iyar / May 15**

Yisrael Meir ben Gedaliah  
Fanny Libanoff

**16 Iyar / May 16**

Louis Friedman

**17 Iyar / May 17**

Yetta Kliebard  
Wilma Pour  
Miriam "Mickey" Pressman  
Moshe Stein  
Harry Zakhem

**18 Iyar / May 18**

Levi DeLevie  
Max Harris  
Hiram Mendow

**19 Iyar / May 19**

Al Frost  
Oscar Rapkin  
Aaron Schuster  
Harry Shapiro  
Ida Sweet  
David Winnick

*(Continued on page 12)*

## Yahrziets

### 20 Iyar / May 20

Rose Dachman  
Betty Orman-Joseph  
Milton Prosansky

### 21 Iyar / May 21

Rose Paley  
Mary Richman  
William Shovers

### 22 Iyar / May 22

Aaron Epstein  
Joy Kurzer  
Charles Lipstein  
Sam Paley  
Hazel Sherman  
Sam Sinykin  
Evelyn Sweet

### 23 Iyar / May 23

Feige Esther Fettman  
Jakab Fettman  
Harry Gerson  
Fruma Mintz  
Bessie Paskin  
Dave Sweet

### 25 Iyar / May 25

Roslyn Hoffert  
Jacob Schmidman  
Rachel Schwartz  
Joseph Schwartz  
Herman Sweet

### 26 Iyar / May 26

Fannie Borsuk  
Anna Katz  
Michael Lewis  
Nellie Miller  
Rose Schwartz  
Gordon Sweet

### 27 Iyar / May 27

Mae Azen  
Robert Donals

### 28 Iyar / May 28

Paul Fram  
Isidor Frankel  
Shirley Kniaz-Banberger  
Jacob Musin  
Alfred Regenstein  
Robert Thomadsen  
Tena Wasserstrom

*(Continued on page 13)*



## Social Action

### Friends of Emerson Initiative

As the school year winds down, we are pleased to report great success with the Friends of Emerson School Initiative. Many Beth Israel members and others from around the Jewish community have volunteered at our adopted school.

The BIC Social Action Committee wants the congregation, especially those participating in the Friends of Emerson School project, to consider attending the annual Foundation for Madison's Public Schools/Circle of Friends Luncheon at the Alliant Energy Center, which will be 11:30-1:30 on **Tuesday, May 6**. The event is FMPS's largest fundraiser of the year. The Social Action Committee will contribute the \$100 per seat donation for two volunteers to join others at the event. Please contact the office if you'd like to attend as part of the BIC Social Action Committee delegation. More info can be found at [www.fmeps.org](http://www.fmeps.org).

The Beth Israel representatives on Jewish Congregations for Social Justice are Nancy Resnick, Larry Bensky, Bob Skloot, and Judy Pierotti. Contact any of them for more information on Friends of Emerson School.

Or go to: <http://www.jewishcongregationsforsocialjustice.org>.

### The Road Home

Four times each calendar year, Beth Israel Center serves as a Buddy Congregation when Midvale Community Lutheran Church, at the corner of S. Midvale and Tokay Boulevards, hosts homeless families in transition to permanent housing. Our next Buddy Congregation week is June 8-15. Please visit [www.bethisraelcenter.org](http://www.bethisraelcenter.org) or [www.midvalelutheran.org](http://www.midvalelutheran.org) to sign up.



## Condolences to the families of

Alfred Kadushin, father of Goldie Kadushin (Steve Morrison)

Brian Friedman, son of Harry and Bertha Friedman

Jerold Gross, husband of Adrienne Borisy-Gross; father of Steven Gross (Cordelia Martinez) and Miriam Gross; step-father of Felice Borisy-Rudin (Nathan Rudin), Pippa Borisy (Vadim Lando), and Alexis Borisy (Lia Meisinger); grandfather of Shoshana, Isaac, Samuel, Debbie, Maxim, Talya, David Zephyr, Gideon and Harvey.

Herschel Seder, father of Diane Seder (Bruce Rosen)

Dan Pierotti, husband of Judy Pierotti; father to Eric, Elizabeth (Iku), Ann-Mari (Steve), Jeremy (Kathryn), Matthew (Jennie), Rachael (Jerry) and Alex; grandfather to Isamu, Eliana, Kyle, Amira, Simone, Josh and Jesse.

Kenneth Rodan, formerly Kurt Reichmann, father of Ilona Rodan Ganetzky (Barry), grandfather of Rebecca (David)

Carol Kean

Adele Klein Hirsch, mother of Cynthia Hirsch, grandmother of Ethan Hirsch Witkovsky (Erin Beser) and Benny Hirsch Witkovsky



# Kabbalat Shabbat

Kabbalat Shabbat is one of the most beautiful times of the week. Every Friday night, as we transition from our weeks filled with work, school, and community activities, we have the opportunity to come together to welcome the peace of Shabbat.

While our synagogue is being remodeled, Kabbalat Shabbat services, Friday nights at 5:45, are being held in various locations, including members' homes in the Vilas and University Heights neighborhoods. Please check the website and watch your email for more information. Here are the locations that were set as this newsletter went to press:

May 2 ~ the Glenwood Moravian Church, 725 Gilman Street, with a potluck dinner!

May 9 ~ the home of Cynthia Hirsch, 611 S. Prospect

May 30 ~ the home of Kris Rasmussen and Bob Factor, 1808 Jefferson

June 6 ~ the home of Cynthia Hirsch, 611 S. Prospect

June 13 ~ the home of Kris Rasmussen and Bob Factor, 1808 Jefferson

June 20 ~ at Hoyt Park, potluck dinner to follow

June 27 ~ the home of Cynthia Hirsch, 611 S. Prospect

July 11 ~ the home of Cynthia Hirsch, 611 S. Prospect

July 18 ~ at Hoyt Park, potluck dinner to follow

August 1 ~ the home of Kris Rasmussen and Bob Factor, 1808 Jefferson

August 15 ~ at Hoyt Park, potluck dinner to follow

August 22 ~ the home of Cynthia Hirsch, 611 S. Prospect

August 29 ~ the home of Cynthia Hirsch, 611 S. Prospect

September 5 ~ at Hoyt Park, potluck dinner to follow

The Beth Israel Center strategic plan, developed by the Board of Directors in 2010, prioritizes strengthening our congregational Kabbalat Shabbat observance. To assure that we have a vibrant minyan every Friday evening, we invite groups of committee members, Talmud Torah parents, MOUSY mice, and others to join with fellow congregants on particular dates and participate in our Kabbalat Shabbat service.

In addition to supporting that week's minyan, this plan provides a wonderful opportunity for people within those groups to come together after the service for a Shabbat gathering if they wish. Among the feedback we have received since beginning this initiative is that groups who plan a communal dinner at one of their homes following the service find the experience to be even more meaningful.

When your congregational group is asked to participate in the Kabbalat Shabbat minyan, please know that your families and friends are very welcome, as well. The service begins at 5:45 and lasts about 45 minutes. We are confident that you will find great satisfaction in contributing to our Beth Israel community in this way.

Here are the special invitations for May and June:

May 9 ~ MOUSY

May 23 ~ Ritual Committee

May 30 ~ Kitah Bet

June 13 ~ Education Committees

June 20 ~ Board of Directors

June 27 ~ Finance and Personnel Committees

## Yahrziets

### 29 Iyar / May 29

Frieda Blachman  
Hena Daitch  
Rose Druch  
Daniel Hill  
Solomon Swack  
Frieda Weinstein

### 1 Sivan / May 30

Sophie Figler  
William Schuckit  
Emanuel Simon

### 2 Sivan / May 31

Lois Ansell  
Steven Kopelberg  
Abraham Peturs  
Hilda Pover  
Meyer Sweet  
Ralph Weisbard

### 3 Sivan / June 1

Laura L. Gladstein  
Sol Jacobson  
Samuel Moskowsky  
Hyman Mullin  
Meril Stein  
Rosa Sweet  
Anne Sweet  
Henry Yaskal

### 4 Sivan / June 2

W. Feldman  
Honey Korshak  
Sarah Kress

### 5 Sivan / June 3

Susan Freund  
Baileh Paley  
Alex Seltzer

### 6 Sivan / June 4

Israel Barkin  
Linda Cohn  
Etta Lakritz  
Shirley Magness  
Jennie Sinaiko  
Jeannette Switzky

### 7 Sivan / June 5

Evelyn Jellinek

### 8 Sivan / June 6

George Deutsch  
Lloyd Frank  
Abraham Nosofsky  
Ronald Rosen  
Bess Stein

*(Continued on page 14)*

## Yahrziets

### 9 Sivan / June 7

Harry Altshuler  
Mae Borisy  
Asher Lazimy  
Rose Schwartz

### 10 Sivan / June 8

Sam Chudacoff  
Max Goldstein  
Samson Mandelbaum  
Frances Rossman  
Samuel Wander  
Dave Weinstein

### 11 Sivan / June 9

Abraham Barash  
Morris Cohen  
Sarah Littky  
Claire Navin

### 12 Sivan / June 10

Emil Barth  
Nathan Frank  
Nancy Gelman  
Sylvia Kadushin

### 13 Sivan / June 11

Nessie Goldberg

### 14 Sivan / June 12

Mary Galanter  
Harry Kay  
Eli Mullin

### 15 Sivan / June 13

Herman Black  
Fannie Mack  
Julius Miller  
Hiam Orman  
Claire Swartz  
Herman Temkin  
Sasha Temkin  
Ellen Weiss Zifkin

### 16 Sivan / June 14

Sophie Cohen  
Harry Cramer  
Steve Rader  
Rudolph Rich  
Julius Ruskin

### 17 Sivan / June 15

Ben Blachman  
Jacob Mintz  
David Remis  
Arthur Yaskal



# Memorial & Tribute Gifts

Many thanks to all the donors listed on these pages. Tzedakah in the form of contributions such as those listed here is many things. It symbolizes what matters to our congregation and, in very real and tangible ways, keeps our doors open, lights on, staff paid, food served, books bought, and more.

The contributions acknowledged here were received at Beth Israel Center between January 15 and April 14, 2014. Gifts received since April 14 will be acknowledged in the Summer Centerite. Please contact the office with questions.

## Abe Barash Fund

*In honor of*

**The 20th Yahrzeit of Howard Temin and the Bar Mitzvah of Isaac Kianovsky** From Herbert Lewis & Francie Saposnik

*In memory of*

**Kenneth Rodan, Herschel Seder, father of Diane Seder, Fanny Kaufman** From Herbert Lewis & Francie Saposnik  
**Anita Kapell** From Isaiah & Agnes Rothblatt  
**Susan Jacobs** From Sion & Jane Shabtaie

## Art Fund

*Get Well*

**Refuah Schlemah to Judith Zuckerman Kaufman** From Rayla Temin

*In honor of*

**Rayla Temin's Torah Service** From Harry & Karen Roth

*In memory of*

**Leo Hill** From Ghita Bessman

## General Fund Contribution

*In memory of*

**Harold Borenstein** From Allen Kwass  
**Brian Friedman** From David Friedman  
**Burnard Frank** From Helen Frank  
**Martin Steinberger, Gertrude Steinberger and Meyer Jacob** From Henry Steinberger & Gail Jacob  
**Esther Sweet** From Howard Sweet  
**Jennie Chortek** From Irving Chortek  
**Arthur Mead** From Jean Mead  
**Cohn, Dubrov & Nathenson Families** From Linda Freeman  
**Jerry Shapiro** From Lon Shapiro  
**Ida Figler** From Michael Figler  
**Bernard Kaplan** From Michael Kaplan & Beverly Richey  
**Haim ben Manachem Haimson** From Mr. Bezalel Haimson  
**Harold Borenstein** From Nancy Thomadsen  
**Goldie Musin** From Ralph & Charlotte Musin  
**Harold Borenstein** From Shirley Sweet  
**Jerry Gross** From Stephen & Marsha Rudin  
**Alex Schwartz** From Susan & David Fish  
**Dan Pierotti** From Theodore & Irene Knupp

*(Continued on page 15)*



# Memorial & Tribute Gifts

## **Jake Heifetz Fund**

*In memory of*

**Fania Heifetz** From Lawrence Heifetz and Steve Heifetz

## **Mazor Kiddush Fund**

*In honor of*

**My wonderful sister, Rayla Temin** From Barry & Rebecca Goz

**Rayla Temin** From Burke Richmond & Erica Kesin Richmond, Daniel Pekarsky & Stephanie Stone, Gideon Klionsky, Harvey & Trudy Barash, Herbert Lewis & Francie Saposnik, Herman Goldstein, Jeff Lindholm & Leslie Fields, Livia Asher, Max Rosenbaum, Nancy Feingold, Ralph & Charlotte Musin, Robert & Joann Skloot, Samuel Gellman & Julie Plotkin, Si & Billie Hellerstein, Aaron Friedman & Sally Jones, Alan & Jean Lettofsky, Allan Levin, Gay Goldstein, Sherwood Malamud & Barbara Spar

**Anna Heifetz's Birthday, Clara Sweet's birthday, Isaac Kianovsky's Bar**

**Mitzvah and Rayla Temin** From Michael Pressman & Marsha Cohen

**Deb Hoffman** From Rayla Temin

*In memory of*

**Jerry Gross** From Barry & Nancy Rich

**Caroline Sulman** From David Sulman & Anne Altshuler

**Brian Friedman, Bell Friedman and Debra Friedman** From Judi Nelson Stern

**Herschel Seder, Lois Lashley, mother of Rick Ezell, Jerry Gross, Susan Jacobs, Dan Pierotti, Adele Klein Hirsch** From Michael Pressman & Marsha Cohen

**Mother, Lillian Greenberg; sister, Jennie Lebowitz; Jerry Gross; and Amie, cousin of Daniel Pekarsky and Stephanie Stone** From Rayla Temin

## **L'Dor v'Dor One Time gifts**

*Get Well*

**Judith Zuckerman Kaufman** From Herman Goldstein

**Norman Borenstein** From Natalie Borenstein

**Judith Zuckerman Kaufman** From Robert Schwartz

*In honor of*

**Diane Gutmann's birthday** From Harvey Temkin & Barbara Myers Temkin

**Rayla Temin** From Herman Goldstein

**Anna Heifetz's birthday** From Howard & Heidi Bregman, Lisa Hoffman, Ralph & Charlotte Musin

**The Ritual Committee in appreciation for services provided, Alfred & Lois Frank's anniversary, the Bar & Bat Mitzvah's of Herman Goldstein's grandchildren and Rayla Temin** From Natalie Borenstein

**Sara Kivolovitz** From Perry Kivolowitz

**Rayla Temin** From Perry & Sara Kivolowitz

**Perry Kivolovitz** From Philip Hollander & Juliet Page

**Rayla Temin** From Renata Laxova

**Leora Saposnik's art show** From Robert Factor & Kris Rasmussen

*In memory of*

**Harold Borenstein, Jerry Gross** From Ben & Sherry Hirschfeld

## **18 Sivan / June 16**

Haskell Friedman  
David Ottenstein

## **19 Sivan / June 17**

Israel Segal

## **20 Sivan / June 18**

Florence Alexander  
Gail Busha  
Helen Machlis  
Frank Marion  
Harriet "Honey" Rutchick  
William Sweet

## **21 Sivan / June 19**

Pesach Bebczuk  
Gerald Kurzer  
Sam Lakritz  
Hyman Lerner

## **22 Sivan / June 20**

Rose Picus  
Hyman Pinsky  
Sarah Scher  
Yehuda Temkin

## **23 Sivan / June 21**

Harry Gevirman  
Anna Schwam

## **24 Sivan / June 22**

Howard Eisenberg  
Susan Louis

## **25 Sivan / June 23**

Alex Cohen  
Harry Figler  
Lubey Mintz  
Pearl Rutel  
Ida Schuckit  
Louis Schwartz

## **26 Sivan / June 24**

Eva Lassen

## **27 Sivan / June 25**

Esther Bloomfield  
Molly Ginsberg  
Sydelle Patton  
Yetta Sinagub  
Frieda Stein

## **28 Sivan / June 26**

Eric Baum  
Bessie Perlman  
Riva Polyakova  
John E. Wear

*(Continued on page 16)*

## Yahrziets

### 29 Sivan / June 27

Binyamin Fine  
Eugene Greenberg  
Sol Lieberman  
Betty Silverman  
Dorothy Saposnik Smith

### 30 Sivan / June 28

Barbara Bernstein  
Dientia DeLevie  
Fannie Perlman  
Sol Sweet

### 1 Tammuz / June 29

Richard Brauer  
Belle Novick  
Paul Rock

### 3 Tammuz / July 1

Belle Epstein  
Selig Iwanter

### 4 Tammuz / July 2

Meyer Pover  
Helen Rittenhouse  
Bernard Schwab  
Robert Smith

### 5 Tammuz / July 3

Beatrice Littman  
Dora Tomarkin

### 6 Tammuz / July 4

Martha Barth  
Mrs. Ben Rubin

### 7 Tammuz / July 5

Isidore Andrusier  
Louis Fine  
Julia Haber Lakritz  
Francine Massey  
Sidney Menchel  
Anne Onikul

### 8 Tammuz / July 6

Lil Gerson

### 9 Tammuz / July 7

Joel Epstein  
Ben Jacobs  
Melba Katz  
Al Mocny  
Frances Myers  
Maurice Pekarsky  
Susan Sinaiko

*(Continued on page 17)*



# Memorial & Tribute Gifts

*L'Dor VaDor One-Time Gifts, In memory of (continued)*

**Dan Pierotti** From Bill & Jill Boissonnault

**Phil Kapell, Anita Kapell** From Cheryl Lerner

**Ervin Blake** From Cheryl Temkin

**Sol Levin** From Daniel & Kathy Levin

**Alfred Kadushin** From Donald & Kathy Miner

**Sara Radbil Schwartz** From Fred & Sylvia Schwartz

**Herschel Seder, father of Diane Seder, Brian Friedman, Dan Pierotti, Harold Borenstein, Richard Sweet, Adele Klein Hirsch, Kenneth Rodan**

From Harvey Temkin & Barbara Myers Temkin

**Adele Klein Hirsch** From Herbert Lewis & Francie Saposnik

**Jerry Gross, Dan Pierotti** From Herman Goldstein

**Dan Pierotti** From Howard & Heidi Bregman

**Louis Mazursky, Rachel Mazur, Marvin Mazursky** From Howard & Sally Mazur

**Shirley Swack, and Sam Gellman's mother** From Jeanne Swack

**Leonard Loeb** From Jordy & Jessie Loeb

**Rayla Temin** From Judy Pierotti

**The Nathansons and Sam & Clara Cohn** From Linda Freeman

**Harold Borenstein** From Lisa Hoffman

**Helena Siroky, Martin Siroky, Adele Klein Hirsch** From Livia Asher

**Anne Cooper** From Marilyn & Stuart Cooper

**Anne Layton** From Martin Layton

**Brian Friedman, Sara Schwartz and Harold Borenstein, My mother, Sarah Schmidt** From Natalie Borenstein

**Molly Epstein Karp** From Norma Klagos

**Dan Pierotti, Adele Klein Hirsch, Lois Lashley, mother of Rick Ezell (Kristen Bernard)** From Perry & Sara Kivolowitz

**Ann Slaveney and Mollie Becker** From Phyllis Eisenberg

**Corneilia Dixon and Jerome Frank & Families** From Rachel Dixon

**Harold Borenstein** From Ralph & Charlotte Musin

**Morris Greenberg** From Rayla Temin

**Dora Schwartz** From Richard Schwartz

**Susanne Gellman, Daniel Kleinman, Herschel Seder and Jerry Gross** From Robert Factor & Kris Rasmussen

**Dan Pierotti** From Robert Schwartz

**Marilyn Borenstein Holman and Harold Borenstein** From Robert Schwartz

**Harold Borenstein** From Roger & Shirley Peterson

**Harold Borenstein, Morris Levin, Brian Friedman, Jerry Gross and Sol Levin** From Roz Levin

**Herman Onheiber** From Sam & Maria Onheiber

**Harold Borenstein, David Rosenthal, Lois Lashley, mother of Rick Ezell (Kristen Bernard), Jerry Gross, Adele Klein Hirsch, mother of Cynthia Hirsch** From Si & Billie Hellerstein

**Harold Borenstein** From Steven Borenstein & Sandra Bernstein

**Henry Gutmann** From Thomas Palay & Diane Gutmann

**Brian Friedman** From Virginia Graff

**Joseph Sweet** From Walter & Judith Shapiro





# Memorial & Tribute Gifts

## **Mikvah Repair Fund**

*In honor of*

**Sylvia Grunes** From Joshua & Rebecca Ben-Gideon and Karen Shevet Dinah

*In memory of*

**Adele Klein Hirsch, mother of Cynthia Hirsch** From Bill & Jill

Boissonnault

**Adele Klein Hirsch** From Jeff Lindholm & Leslie Fields

## **Mintz Fund**

*In honor of*

**Anna Heifetz's birthday** From Moshe & Haya Yuchtman

*In memory of*

**Hyman Daniels and Jena Daniels** From Barbara Beyer

**Ida Paley, Abe Mintz, Mollie Paley Finn, Moshe Paley, Ben Paley, Hyman**

**Paley, The wife of Stanley Mintz and the husband of Dana Lin**

**Bernstein** Marvin & Phyllis Eisenberg

**Jerry Gross** From Phyllis Holman Weisbard

## **Morris Heifetz Fund**

*In honor of*

**Anna Heifetz birthday** From Roz Levin

*In memory of*

**Erving Haber** From Mr. Sheldon Haber

**Sara Schwartz** From Robert Schwartz

## **Prayerbook Fund**

*In memory of*

**Morris Wyman and Joseph Wyman** From Ida Wyman

**Rick Ezell's mother, Lois Lashley** From Rayla Temin

## **Rabbi's Discretionary fund**

*In honor of*

**Mike Pressman and Daniel Pekarsky** From Amy Fruchtman

*In memory of*

**Daniel Pierotti** From Judy Pierotti

**Harold Borenstein** From Larry & Sari Rosen

**Ruth Zitowsky** From Mr. Robert Zitowsky

**Galina Soroka, sister of Gregory & Nina Kleinman** From Robert Schwartz

## **Rosenberg Education Fund**

*In memory of*

**Sam Etzkin** From Helen Frank

## **Rosenberg Library Fund**

*In honor of*

**Jim and Ziva Wear's work on the Supper Quiz** From Rick Ezell

*In memory of*

**Ceilia Rosenberg** From Irwin Rosenberg

**Ida Moskowsky** From Samuel Moss

**Jacob Popkewitz** From Thomas Popkewitz & Lea Aschkenase

## **10 Tammuz / July 8**

Louis Barkin

Louis Setlick

Benjamin Weisbrod

## **11 Tammuz / July 9**

Sophie Schuster

## **12 Tammuz / July 10**

Sam Cohn

Sedelle Diamond

Arlyne Eisenberg

Morris Kniaz

Alma Sweet

Bessie Yaskal

## **13 Tammuz / July 11**

Arthur England

## **14 Tammuz / July 12**

Nathan Goldstone

Yetta Temkin

## **15 Tammuz / July 13**

Max Gold

Henry Levine

William Schwartz

## **16 Tammuz / July 14**

Helen Haber

Daniel Mack

Phillip Mann

Alex Paskin

Genevieve Ruben

## **17 Tammuz / July 15**

Marlene Ansell

Cecile Ehrman

Fay Maydeck

Jean Ritter

## **18 Tammuz / July 16**

Mary Grossman

Harry Seeman

Sarah Zaichick

## **19 Tammuz / July 17**

Lawrence Borenstein

Rosa Kammer

Samuel Tomarkin

## **20 Tammuz / July 18**

Ilse Brauer

Freda Jacobson

Molly Paster

Sam Rosenthal

*(Continued on page 18)*

**Yahrziets**

**21 Tammuz / July 19**

Max Ruskin  
Vera Terry

**22 Tammuz / July 20**

M. Jack Epstein  
Alex Kaplan  
Millie Kaplan  
Seymour Kaye  
Norman Parisek  
Eva Perlman  
Isaac Perlman  
Dinah Silverman

**23 Tammuz / July 21**

Norton Gahr  
Rae Rapkin  
Daniel Raskin  
Ruth Schwartz

**24 Tammuz / July 22**

Hyman Harry Minkoff  
Israel Victor  
Isadore Victor

**25 Tammuz / July 23**

Ida Bradkofsky  
Samuel Springberg

**26 Tammuz / July 24**

Dora Moser  
Frieda Pinsky  
Sam Pollack  
Grace Rasmussen  
Hyman Schuster  
Linda Tetzlaff

**27 Tammuz / July 25**

Frume Frank  
Fannie Stein

**28 Tammuz / July 26**

Rachel Mullin  
Bud Sweet  
Louise Wear

**29 Tammuz / July 27**

Elizabeth Berg  
Sidney Bernstein  
Celia Labow Holman  
Sophie Levine

**1 Av / July 28**

Lisa Sklarin  
Molly Tomash

*(Continued on page 19)*



# Memorial & Tribute Gifts

**Shirley Epstein Fund**

*In memory of*

**Brian Friedman and Bill Schwartz** From Robert Schwartz  
**Walter Novick** From Ruth Ann Schumeister

**Social Action Funds**

*In memory of*

**Dan Pierotti** From Jeff Lindholm & Leslie Fields and Rayla Temin  
**George Skloot** From Robert & Joann Skloot

**Weinshel Torah Maintenance Fund Donation**

*In honor of*

**Anna Heifetz's birthday and Rayla Temin in appreciation for her work as gabbai and Ritual Committee member** From Karen Shevet Dinah

*In memory of*

**Isador Borsuk** From Gerald & Lorraine Borsuk  
**Howard Temin on his 20th Yahrzeit** From Rayla Temin

Memorial and tribute gifts may be made at any time to Beth Israel Center's general fund or any of the funds listed on these pages. Descriptions of the various funds can be found on our website, [www.bethisraelcenter.org](http://www.bethisraelcenter.org), under "Ways to Give."

To donate, simply send a check to Beth Israel Center, 126 S. Hamilton St., Madison, WI 53703 (our temporary address for spring and summer 2014).

## May 2014

Sun	Mon	Tue	Wed	Thu	Fri	Sat
				1	2 Joey Weisenberg	3 Joey Weisenberg
					Kabbalat Shabbat & Potluck dinner	<i>Emor</i>
4 Joey Weisenberg Daveners Studio Yom Rishon	5	6	7	8	9	10
Groundbreaking	Yom Hazikaron	Yom Ha'atzmaut	Lunch & Learn		Kabbalat Shabbat: MOUSY	<i>Behar</i>
11 Sulam	12	13	14	15	16	17
		Board of Directors				Kibud Limudim Sulman Kiddush <i>Bechukotai</i>
18 Last Talmud Torah	19	20	21	22	23	24
Lag B'Omer BBQ @ 3:30pm		Beit Misrash	Lunch & Learn		Kabbalat Shabbat: Ritual Cte.	<i>Bemidbar</i>
25	Office Closed	26	27	28	29	30
	Memorial Day		Yom Yerushalayim		Kabbalat Shabbat: Bet Families Rosh Chodesh	31 Auf ruf Diamond & Hirsch Sponsored Kiddush <i>Naso</i>

# June 2014

Sun	Mon	Tue	Wed	Thu	Fri	Sat
1 Sulam	2	3 Tikkun Leil Shavuot Erev Shavuot	4 Office closed Shavuot	5 Office closed Shavuot Yizkor	6 Kabbalat Shabbat:	7 <i>Beha'alotecha</i>
8 Davener's Studio Yom Rishon	9	10 Board of Directors	11	12	13 Kabbalat Shabbat: Education Cte.	14 <i>Shelach</i>
15	16	17	18	19	20 Potluck @ Hoyt Park Kabbalat Shabbat: Board of Directors	21 <i>Korach</i>
22	23	24	25	26	27 Kabbalat Shabbat:	28 <i>Chukat Rosh Chodesh</i>
29 Rosh Chodesh	30					

# July 2014

Sun	Mon	Tue	Wed	Thu	Fri	Sat
		1	2	3	4 Office Closed Kabbalat Shabbat:	5 <i>Balak</i>
6	7	8 Board of Directors	9	10	11 Kabbalat Shabbat:	12 <i>Pinchas</i>
13	14	15 Fast Day	16	17	18 Potluck @ Hoyt Park Kabbalat Shabbat:	19 <i>Matot</i>
20	21	22	23	24	25 Kabbalat Shabbat:	26 <i>Masei</i>
27	28 Rosh Chodesh	29	30	31		

## Yahrzeits

**2 Av / July 29**  
Tsivia Morgensteren

**3 Av / July 30**  
Bernice Loewenstein

**4 Av / July 31**  
Julius Jacobs  
Anna Nathenson  
Myer Nathenson  
Harry Rosen



*Beth Israel Center maintains a database of Yahrzeit observances for its members. The people listed on these pages are those being remembered by people in our community. The dates listed are the anniversaries of their deaths on the Hebrew calendar, with the corresponding date on the secular calendar for the current year.*

*Our database is only as accurate as the information provided by our members.*

*If you have any questions about or additions to our Yahrzeit list, please contact the office at (608) 256-7763 or [office@bethisraelcenter.org](mailto:office@bethisraelcenter.org).*

# Beth Israel Center

608.256.7763  
126 S Hamilton St.  
Madison, Wisconsin 53703

**Address Service Requested**

Non-Profit  
Organization  
U.S. Postage PAID  
Madison, WI  
Permit No. 395

## May ~ June ~ July Schedule

Date	Parshat	Candle Lighting
May 2/3	Emor	Candles 7:43p
May 9/10	Behar	Candles 7:51p
May 16/17	Bechukotai	Candles 7:59p
May 23/24	Bamidbar	Candles 8:06p
May 30/31	Nasso	Candles 8:12p
June 3/4	Shavuot	Candles 8:15p
June 6/7	Beha'alotcha	Candles 8:17p
June 13/14	Sh'lach	Candles 8:21p
June 20/21	Korach	Candles 8:24p
June 27/28	Chukat Rosh Chodesh	Candles 8:24p
July 4/5	Balak	Candles 8:23p
July 11/12	Pinchas	Candles 8:20p
July 18/19	Matot	Candles 8:15p
July 25/26	Masei	Candles 8:09p

### Shabbat Services

Fridays  
5:45pm

Saturdays  
9:30am

### Weekday Services

Sunday mornings  
8:15am

Monday & Thursday mornings  
7:00am

Sunday—Thursday evenings  
5:45pm

Please call ahead to ensure a minyan.  
Other morning services may be  
organized by request.